



CNC JOB PLANNING, BENCHWORK, AND LAYOUT CERTIFICATION



NIMS (National Institute for Metalworking Skills) is the standard setting organization for precision metalworking skills. NIMS standards are accredited by ANSI (American National Standards Institute.)

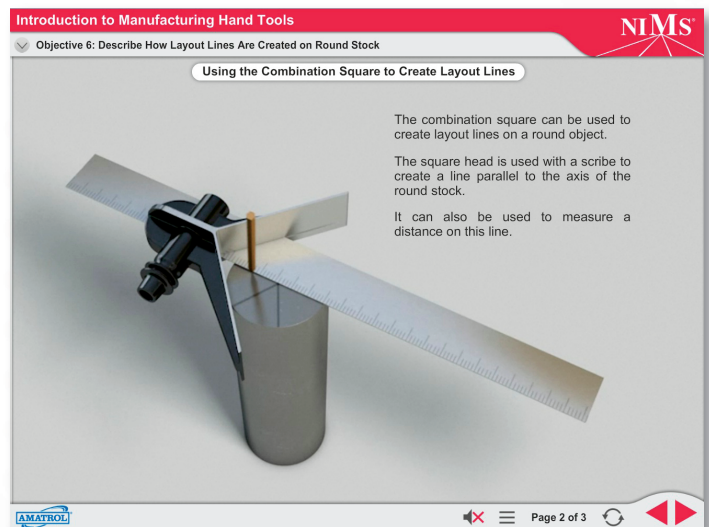
Prepare and Train for the NIMS Job Planning, Benchwork, and Layout Certification from your computer!

- Training is computer-based – either locally installed multimedia or web-based
- Learn both hands-on skills and the knowledge needed for certification
- Industry validated training and standards – these ARE the skills needed for today's sophisticated manufacturing jobs.

Certification Creates Value!

- Deliver consistent product quality – regardless of how many different people or locations involved
- Demonstrate drill press operation, setup, and tooling selection
- Create a basis for differentiating skill and pay levels
- Reduce recruitment cost through leverage of national industry standard credentials
- Increase training results – qualified instructors, reliable approach
- Create portable skill records

Use NIMS-Endorsed Amatrol Multimedia



NIMS endorses Amatrol's multimedia exclusively for the Job Planning, Benchwork, and Layout Certification. Amatrol's curriculum features unmatched content that comes alive with 3D animations, videos, voiceovers, and interactive quizzes. For more information, visit Amatrol.com

CERTIFICATION SIMPLIFIED!

The NIMS Job Planning, Benchwork, and Layout Certification ensures that an individual possess fundamental knowledge like machine tool types, machine cutting concepts, drill setup, tooling, and performance, selecting stock, drill press operation, basic hand tool operation, and round stock layout.

NIMS Job Planning, Benchwork, and Layout Certification: Show You Know How To Do The Job!

- **Given Manufacturing Documentation, Select the Correct Size of Drill Tool, Reamer, Countersink, Counterbore, Spot Face Tool, Tap, and More!**
- **Identify the Major Components of a Horizontal Band Saw**
- **Mount a Tool in a Drill Machine**
- **Inspect Drill Tooling for Wear**
- **Determine Sizes of Four Common Metal Stock Shapes**
- **Use a Prick Punch, Center Punch, and Ball-Peen Hammer to Prepare Holes for Drilling**
- **Drill Holes Using Cutting Fluid**
- **Use a Bench Vise to Hold Material**

NIMS credentials are portable, certifying that a person can perform basic machining processes such as drill tooling inspection, changing the spindle speeds of a floor drill press, marking center points of holes, and cutting a piece of stock using a hacksaw. Find out more about Amatrol's training programs at Amatrol.com.

To find out more about NIMS certification, please visit us at NIMSREADY.org

NIMS Job Planning, Benchwork, and Layout Competency Areas

- Applied Mathematics
- Assembly
- Cutting Tool Selection
- Drilling
- Filing
- Fits
- Inspection
- Layout
- Machine Safety
- Material Preparations
- Measurements
- Print Reading
- Process Planning
- Reaming
- Sawing
- Shop Safety
- Threading

